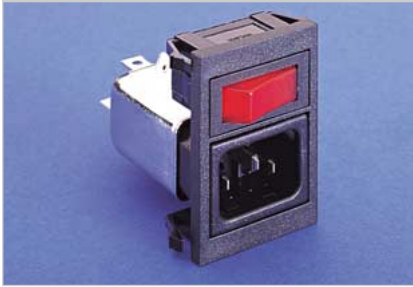
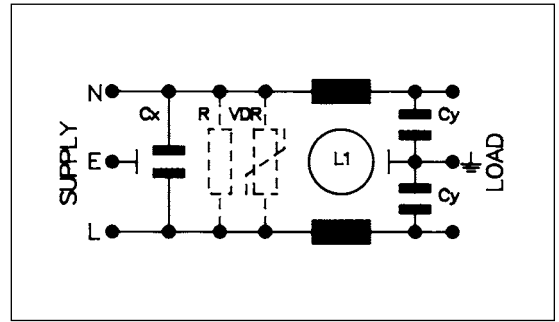


**C14 IEC Inlet - Standard Filter**

**EMI FILTER OPTIONS**



- For Polysnap modules BZV03, BZV04, BZV09, BZV10, BZV17, BZV18, BZH09, BZH10, BZH17, BZH18, BZM27, BZM28
- PX0575 style IEC inlet
- Using PS01/A style filter
- Standard Attenuation Filter



**Bxxxx/A xx x x / xx**

Polysnap Part No.	Filter Type	Rating	L/C Circuit	Additional Components	Polysnap Part No.
From Polysnap Selection	A = Standard	01 = 1A 03 = 3A 06 = 6A 10 = 10A	1 = Version 1 2 = Version 2 3 = Version 3	0 = None 1 = Bleed (R) Resistor 2 = Surge (VDR) Protection 3 = "R" plus "VDR"	From Polysnap Selection

Rating	Version	L1	Cx	Cy	Part No. Example
1 AMP	1	2 x 2.8mH	1 x 15nF	2 x 2.2nF	<b>BZV03/A0120/02 =</b> BZV style Polysnap module with PX0575 IEC power inlet, filter rated at 1 amp, L/C circuit version 2 (L1 = 2 x 10mH, Cx = 1 x 15nF, Cy = 2 x 2.2nF), without bleed resistor or surge protection device fitted, 6.3mm tabs and single pole red neon switch.
"	2	2 x 10mH	1 x 15nF	2 x 2.2nF	
"	3	2 x 10mH	1 x 47nF	2 x 2.2nF	
3 AMP	1	2 x 0.75mH	1 x 15nF	2 x 2.2nF	
"	2	2 x 1.8mH	1 x 15nF	2 x 2.2nF	
"	3	2 x 1.8mH	1 x 47nF	2 x 2.2nF	
6 AMP	1	2 x 0.3mH	1 x 15nF	2 x 2.2nF	
"	2	2 x 0.7mH	1 x 15nF	2 x 2.2nF	
"	3	2 x 0.7mH	1 x 47nF	2 x 2.2nF	
10 AMP	1	2 x 0.17mH	1 x 15nF	2 x 2.2nF	
"	2	2 x 0.35mH	1 x 15nF	2 x 2.2nF	
"	3	2 x 0.17mH	1 x 47nF	2 x 2.2nF	

**Filter Specification**

Max. Working Voltage:	250V a.c. 50-400Hz
Earth Leakage Current:	<0.35mA (250V. 50Hz)
Temperature Range:	-25°C to +85°C
Max. Ambient Temp.: (@ Full Load)	40°C (derate linearly to 0A @ 85°C)
Test Voltage:	2700V d.c. 2 secs. Lines to Earth 1100V d.c. 2 secs. Live to Neutral

Approvals:

Attenuation Curves: See PS01/A filter, page 121

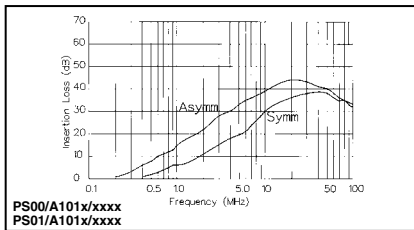
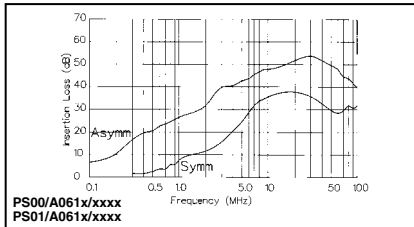
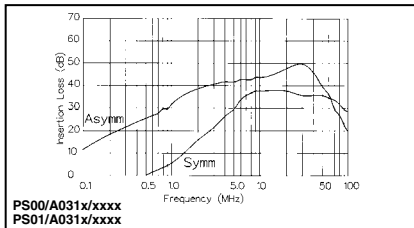
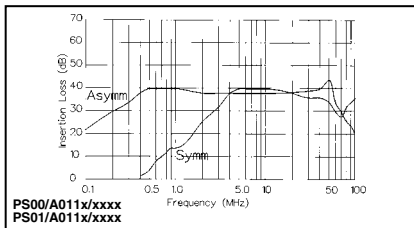
**Rating & Version Table**

**PS00/Axxxx/xx00 & PS01/Axxxx/xxxx**

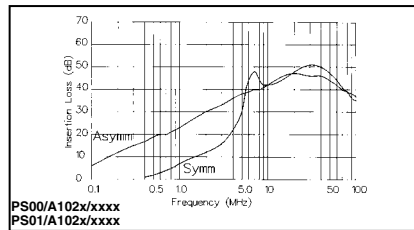
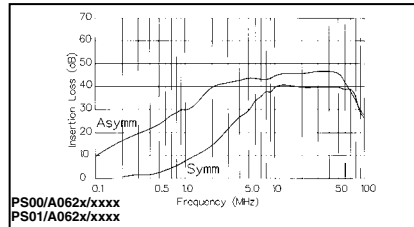
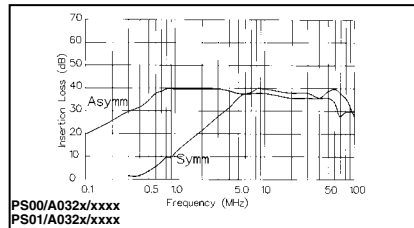
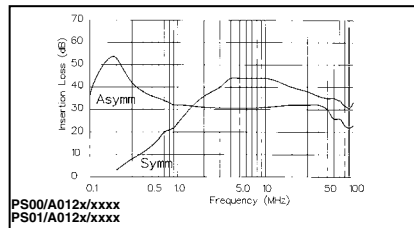
Rating	Version	L1	Cx	Cy
1 AMP	1	2 x 2.8mH	1 x 15nF	2 x 2.2nF
"	2	2 x 10mH	1 x 15nF	2 x 2.2nF
"	3	2 x 10mH	1 x 47nF	2 x 2.2nF
3 AMP	1	2 x 0.75mH	1 x 15nF	2 x 2.2nF
"	2	2 x 1.8mH	1 x 15nF	2 x 2.2nF
"	3	2 x 1.8mH	1 x 47nF	2 x 2.2nF
6 AMP	1	2 x 0.3mH	1 x 15nF	2 x 2.2nF
"	2	2 x 0.7mH	1 x 15nF	2 x 2.2nF
"	3	2 x 0.7mH	1 x 47nF	2 x 2.2nF
10 AMP	1	2 x 0.17mH	1 x 15nF	2 x 2.2nF
"	2	2 x 0.35mH	1 x 15nF	2 x 2.2nF
"	3	2 x 0.17mH	1 x 47nF	2 x 2.2nF

IEC CONNECTORS

**Version 1**



**Version 2**



**Version 3**

