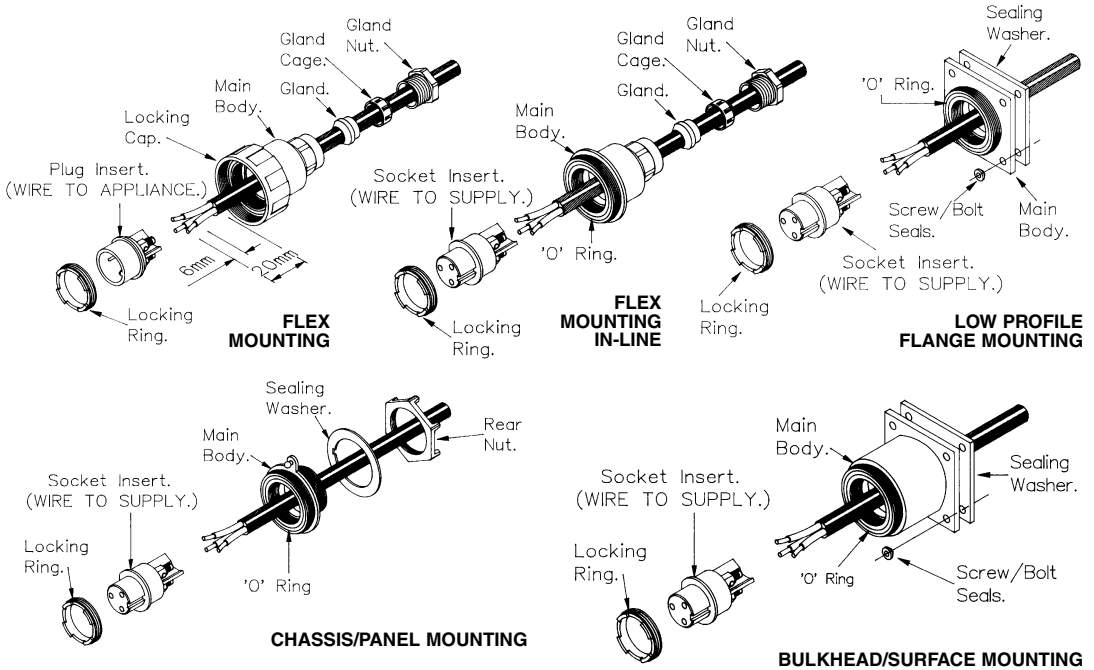


WATERPROOF ELECTRICAL CABLE CONNECTOR WIRING AND ASSEMBLY INSTRUCTIONS



Buccaneer models are available in 2,3,4,6,7 or 9 pin or BNC coaxial versions (50/75Ω).

It is important that these instructions are fully complied with to ensure this product is completely watertight and electrically safe - **IF IN DOUBT CONSULT A QUALIFIED ELECTRICIAN.**

Always wire socket insert to supply, wire plug insert to appliance. However plug/socket inserts can be fitted into any style of main body to give correct plug/socket combination for your application.

Use smooth circular cable only (6-8mm dia). Other cable glands may be available to suit different cable diameters, please enquire.

IMPORTANT SAFETY NOTICE

For your protection all mains (250V) equipment used out of doors, in damp or wet conditions should be supplied from a correctly fused source and protected by an approved R.C.D. to BS7071 or BS7288 or BS4293.

IF IN DOUBT SEEK ADVICE

4 2 to 7 pole inserts:

Insert bare wire ends into terminals on plug/socket insert and fully tighten screws.
Note: If connector is to be used on mains voltage ensure that wires are connected as shown below.

9 pole inserts:

Pins and Sockets are supplied loose for pre-crimping. Crimping tools (including economical hand version) and contact extraction device available. Please enquire.

Mains Wire Connections

Important connect wires

Brown to terminal L

Blue to terminal N

Green/Yellow to terminal E

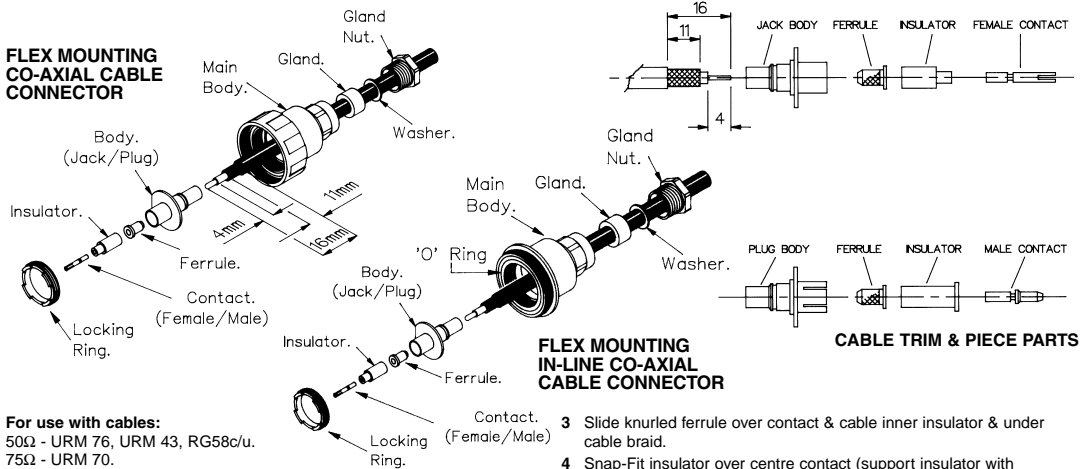


- After connecting wires draw cable back until plug/socket insert is correctly seated in D shaped location in the main body. Screw home locking ring using cap assembly tool.
- For cable mounted units slide gland cage and gland down cable and into main body then screw gland nut fully home. It is essential to ensure that the gland nut is fully tightened to ensure cable is securely sealed and clamped. For chassis, bulkhead and flange units correctly seat sealing washer and main body onto mounting surface and screw down using rear nut or screw/bolts with seals. Ensure seals and glands are kept clean. Locking cap secures plug to socket.

ASSEMBLY/WIRING INSTRUCTIONS

- To remove plug or socket inserts for wiring, use cap assembly tool to unscrew locking ring.
- As appropriate to main body type, thread cable through component parts as shown in the illustrations.
- Strip insulation from cable as shown in diagram.

ASSEMBLY INSTRUCTIONS BUCCANEER R.F. INSERT (BNC COMPATIBLE)



For use with cables:
50Ω - URM 76, URM 43, RG58c/u.
75Ω - URM 70.

Crimp Tool - Hex Cavities,
Centre Contact 1.69 A/F (B.S. 'W'/ERMA XA.)
Braid 6.48 A/F (B.S. 'E'/ERMA XH.)

1 Flex Mount

Fit gland nut, washer, gland & main body loosely over cable, followed by BNC plug/jack metal body.

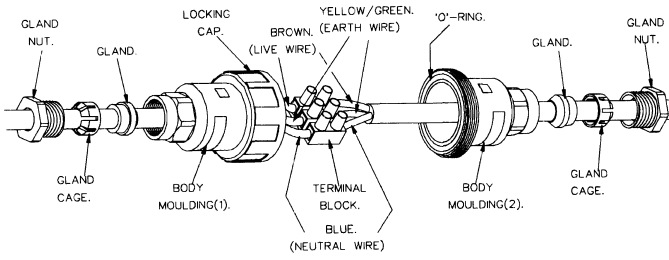
Chassis/Bulkhead

Fit main body to chassis/bulkhead, ensuring sealing washer(s) are in position. Then assemble BNC plug/jack body to cable.

- Crimp centre contact onto cable centre conductor (butting to cable inner insulator).

- Slide knurled ferrule over contact & cable inner insulator & under cable braid.
- Snap-Fit insulator over centre contact (support insulator with assembly mandrel, or against hard surface).
- Push body over assembly, pressing insulator, until ferrule bottoms in body. (SA3155 assembly mandrel is available to aid assembly if required).
- Crimp body to secure cable braid.
- Lock BNC body flange into main body using locking ring. Ensure correct alignment of flange.
- At cable entry, seat gland & washer, tighten gland nut to seal (for flex mount).

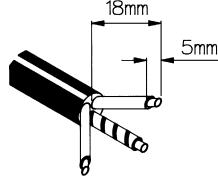
CABLE JOINER



- 1 Strip wires to dimensions shown.
- 2 Assemble component parts onto cable as shown, then connect wires to terminal block, ensuring wires connected into one side of terminal block match wires connected into the other side.

i.e. Brown to Brown (Live)
Blue to Blue (Neutral)
Green/Yellow to Green/Yellow (Earth)

- 3 Bring the two body mouldings together ensuring the 'O' ring is correctly located in groove then lock together with locking cap. Ensure cap is fully tightened. Put gland cage over gland and push fully home into its appropriate body then fully tighten gland nuts.
- 4 To ensure a good seal, all surfaces must be completely free of dust, grease or any other contamination.

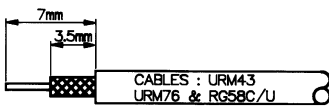
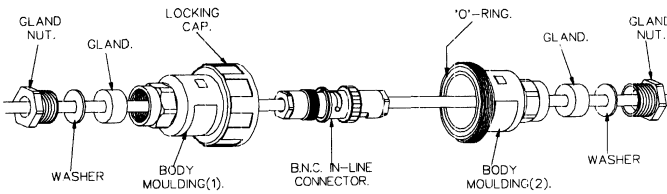


WIRE STRIPPING DETAILS

WARNING

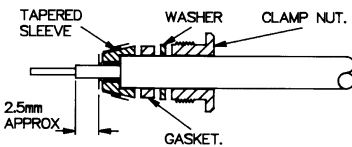
**DISCONNECT MAINS SUPPLY
BEFORE DISMANTLING CONNECTOR**

IN-LINE CO-AXIAL BNC CABLE CONNECTOR



CABLE STRIPPING DETAILS

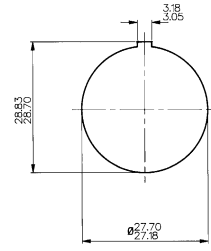
- 1 Slide the gland nut, washer, gland and main body over cable.
- 2 Strip cable and assemble the B.N.C. connector as follows:



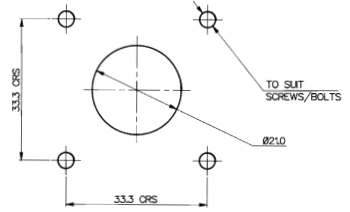
- 3 Slide the tapered sleeve over the cable braid so it fits over the cable sheath.
- 4 Fold the copper braid back over the tapered sleeve to expose approx. 2.5mm of cable inner insulator.
- 5 Lightly tin cable conductor with solder.
- 6 Fit the contact over the conductor to butt against the cable inner insulator and solder.
- 7 Avoid getting solder on the outside of the contact pin or socket.
- 8 Push the assembly into the body and tighten the clamp nut.
- 9 Connect two parts of the B.N.C. connector.
- 10 Bring the two body mouldings together ensuring the 'O' ring is correctly located in its groove then lock together with the locking cap. Ensure cap is fully tightened.
- 11 Push gland and washer fully home into the body and then fully tighten the gland nuts.
- 12 To ensure a good seal, all surfaces must be completely free of dust, grease or any other contamination.

PANEL CUT-OUTS

For standard Buccaneer connectors.



CHASSIS/PANEL MOUNTING



BULKHEAD/SURFACE MOUNTING



SEALING CAP/ASSEMBLY TOOL

Note:

To ensure that the correct sealing properties of the connector are achieved it is imperative that all 'O' rings are correctly located and seated before assembly. Please refer to the exploded diagrams for the locations of these seals.

Part No: 13158, issue 6

BUCCANEER® Waterproof Electrical Cable Connectors

Wiring and Assembly Instructions